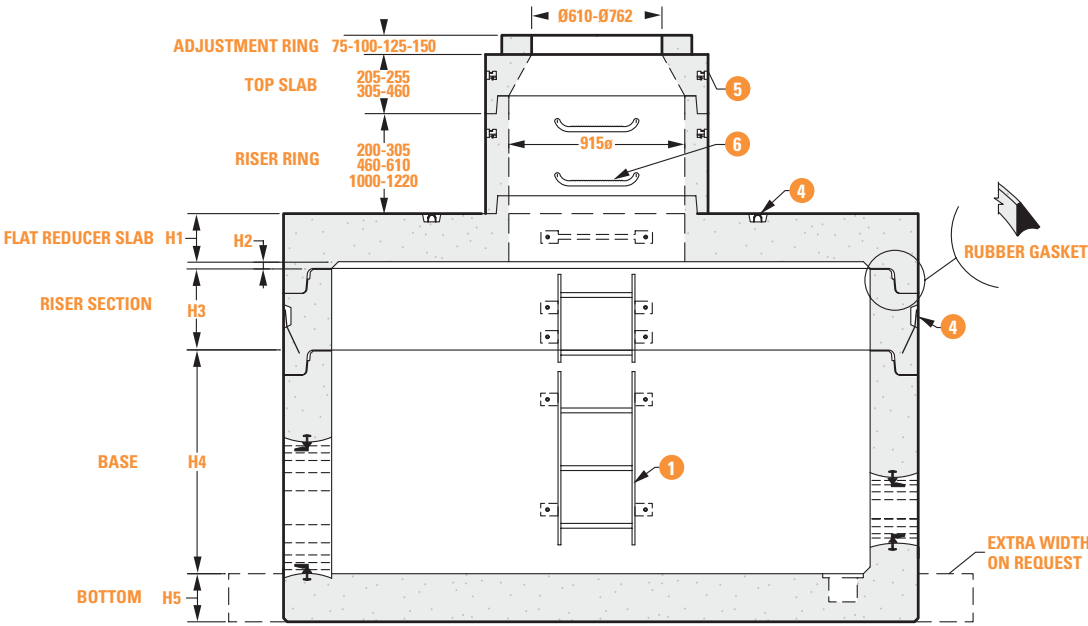


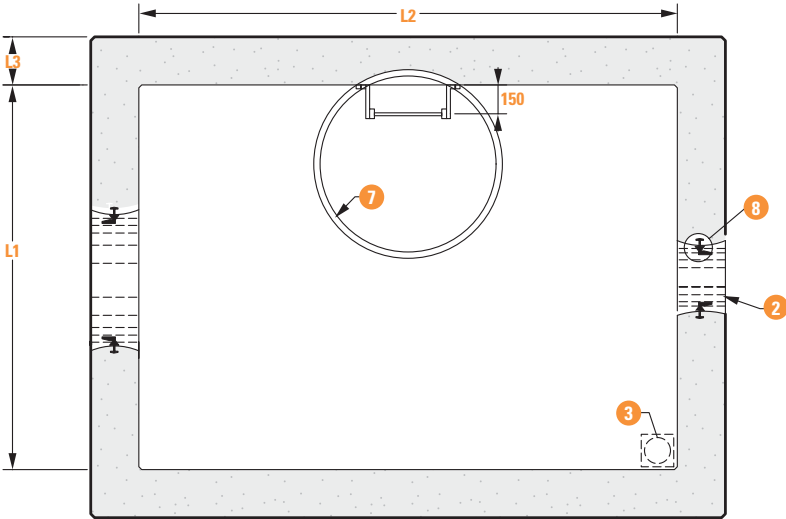
# PRECAST RECTANGULAR CHAMBERS

## STANDARD MODELS GENERAL ROUGH SKETCH

Available for: Sewer manhole, valve chamber, trouser manhole, and pumping station.



ELEVATION



PLAN

## CHART AND INDEX STANDARD MODELS

### PRECAST RECTANGULAR CHAMBERS

	L1	L2	L3	H1	H2	H3	H4		H5		
MODEL	INTERIOR LENGTH	INTERIOR LENGTH	WALL THICKNESS	REDUCER SLAB THICKNESS	HEART CHAMFER	MAX RISER HEIGHT	WEIGHT /LIN. METER (kg)	MAX BASE HEIGHT	WEIGHT / LIN. METER (kg)	BOTTOM THICKNESS	MAXIMUM DIAMETER OF THE DUCTS
RR1400	1400	1400	175	250	25	2150	2515	2275	4300	250	900
RR1850	1850	1850	200	250	35	2150	3760	2275	6700	250	1350
RR2150	2150	2150	225	250	35	2150	4900	2275	8855	250	1500
RR2450	2450	2450	240	300	35	2150	5925	2275	11940	300	1500
RR2500	1500	2500	250	250	35	2350	5165	2300	8650	250	1500
RR3000	2000	3000	250	250	35	2350	6315	2300	11400	250	1500
RR3500	2000	3500	250	250	35	2350	7050	2300	12925	250	1500

\* All dimensions are in millimeters.

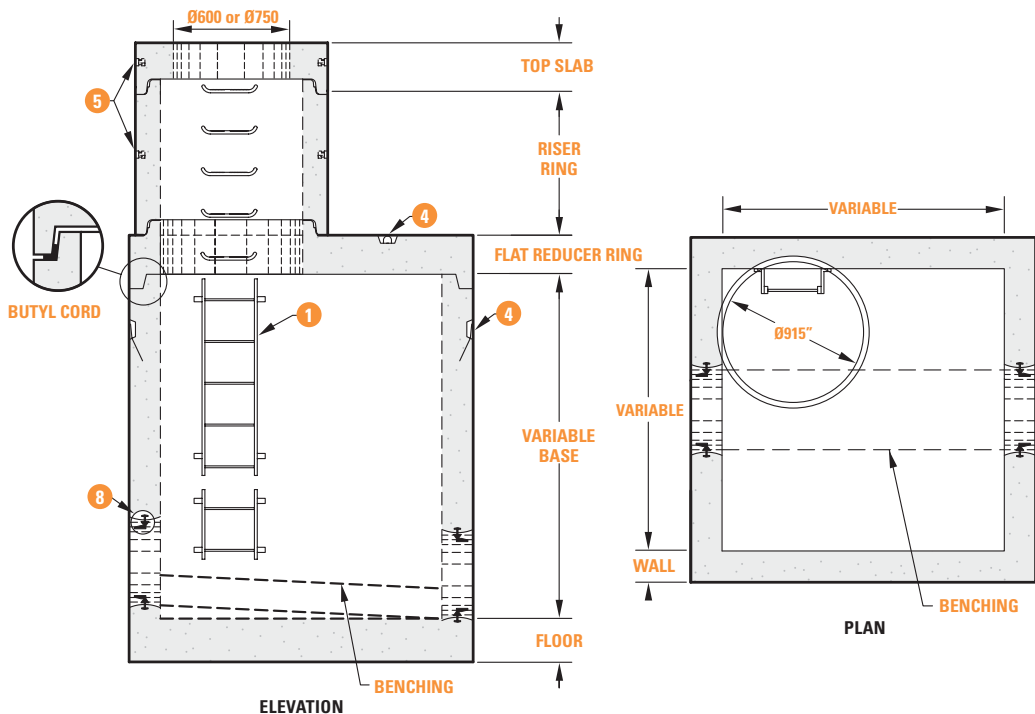
### LEGEND

- 1 Galvanized steel ladder, by section
- 2 Ducts (PVC, cast iron, polyethylene, steel, R.C.P.)
- 3 Sumps or drain (Optionnal)
- 4 Hoisting Cable
- 5 Handling socket
- 6 Polyethylene covered Rung
- 7 Circular or rectangular opening (Access trap)
- 8 Embedded rubber gasket according to the type and the diameter of the pipe  
 Rubber gasket for gravitating PVC (Ø125 @ Ø300)  
 Perforated opening for: existing pipe, pipe with pronounced slope and angle, Link-seal

To determine the slope and maximum angle of the pipes, please communicate with our engineering department.

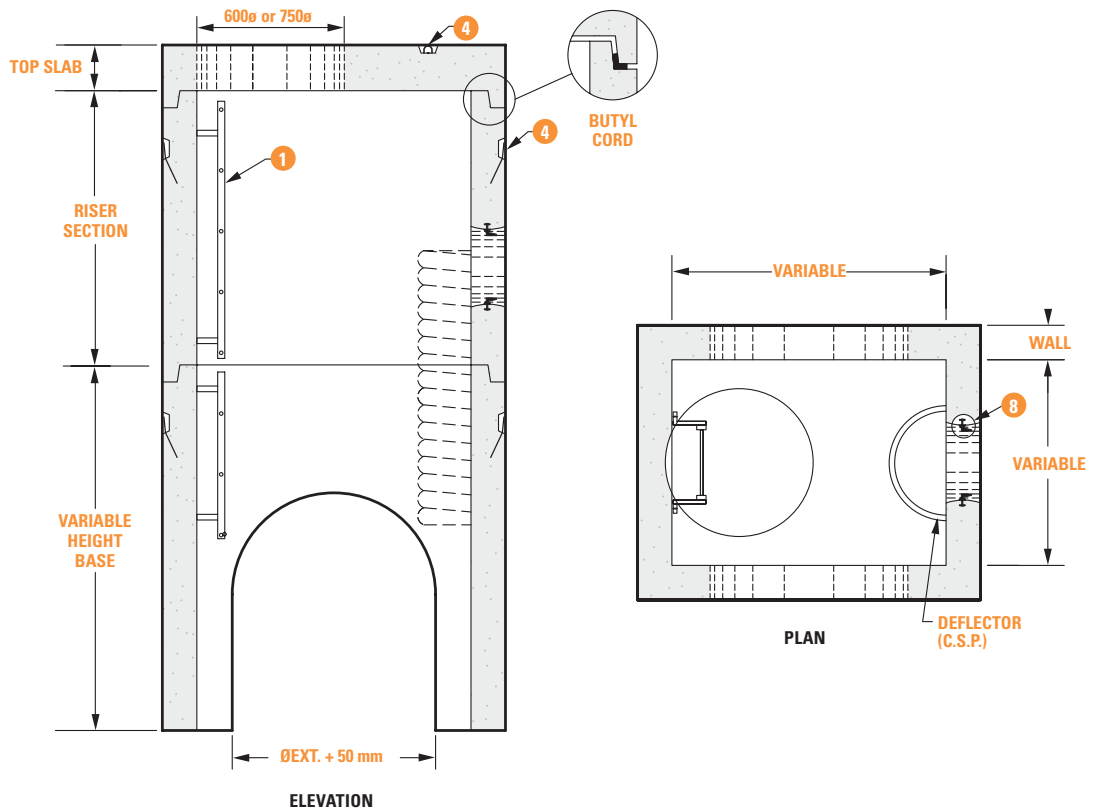
## VARIABLE DIMENSIONS MODELS SEWER MANHOLE

- + Available in particular cases with a factory made benching.
- + Filler concrete provided and installed by the customer.
- + Length and width dimensions within 100 mm range.
- + For transportation, at least one of the exterior dimensions (width or length) must be inferior to 4 500 mm.
- + Hardware and metalworking provided by the customer.



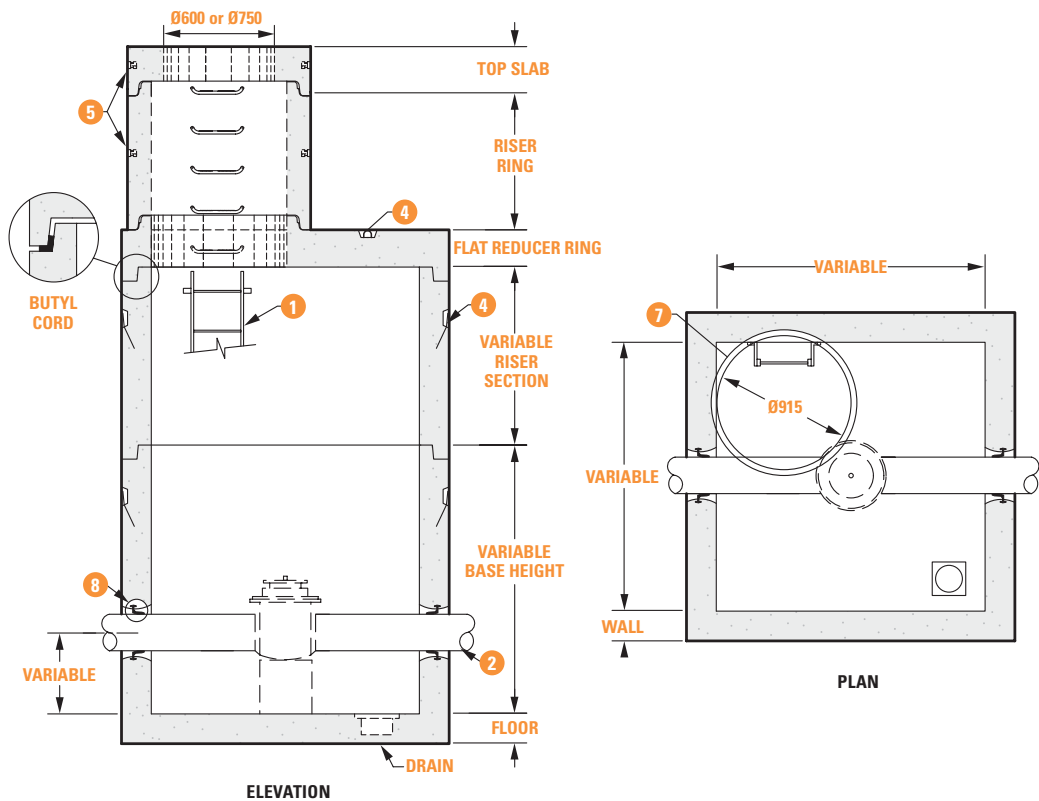
## VARIABLE DIMENSIONS MODELS TROUSER MANHOLE / MANHOLE WITH CHUTE

- + Filler concrete provided and installed by the customer.
- + Length and width dimensions within 100 mm range.
- + For transportation, at least one of the exterior dimensions (width or length) must be inferior to 4500 mm.
- + Hardware and metalworking provided by the customer.



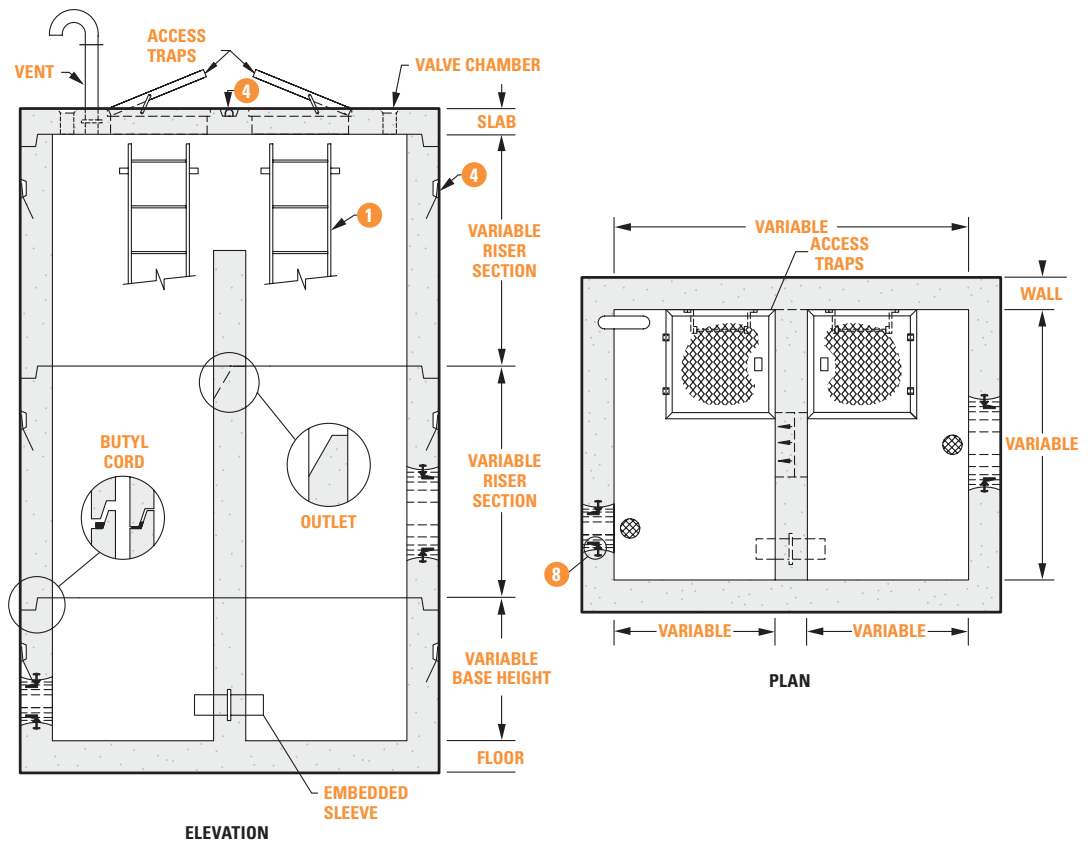
## VARIABLE DIMENSIONS MODELS GATE VALVE CHAMBER

- + Filler concrete and/or support block (if necessary) provided and installed by the customer.
- + Length and width dimensions within 100 mm range.
- + For transportation, at least one of the exterior dimensions (width or length) must be inferior to 4500 mm.
- + Hardware and metalworking provided by the customer.



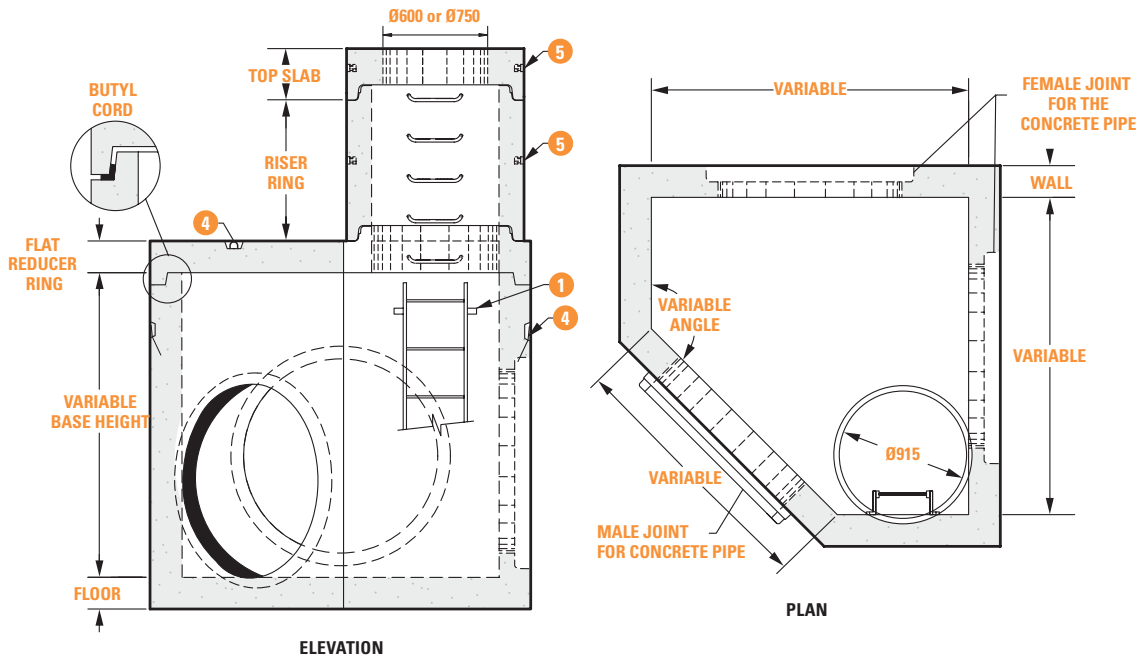
## VARIABLE DIMENSIONS MODELS SPILLWAY MANHOLE

- + Filler concrete provided and installed by the customer.
- + Length and width dimensions within 100 mm range.
- + For transportation, at least one of the exterior dimensions (width or length) must be inferior to 4500 mm.
- + Hardware and metalworking provided by the customer.



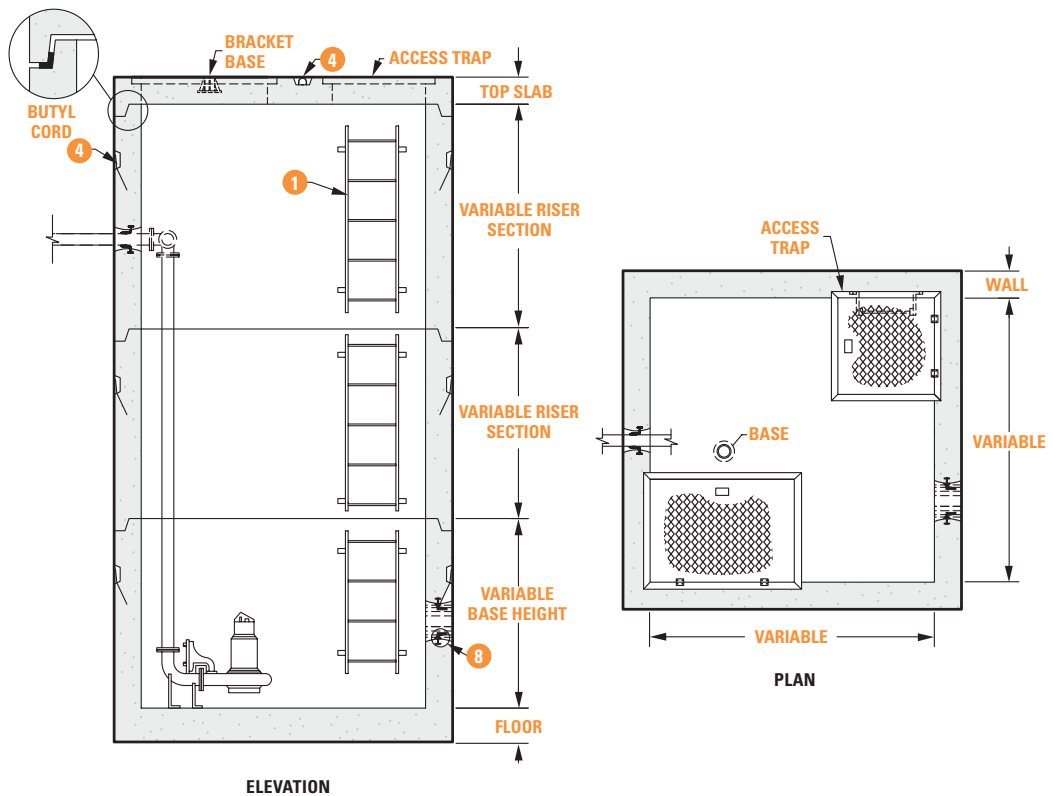
## VARIABLE DIMENSIONS MODELS ANGULAR CHAMBERS

- + Available in certain cases with a factory made benching.
- + Filler concrete (if needed) provided and installed by the customer.
- + Length and width dimensions within 100 mm range.
- + For transportation, at least one of the exterior dimensions (width or length) must be inferior to 4500 mm.
- + Hardware and metalworking provided by the customer.



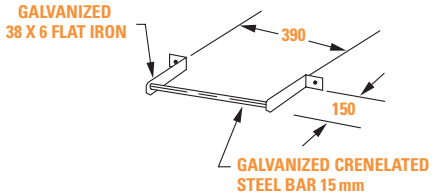
## VARIABLE DIMENSIONS MODELS PUMPING STATION

- + Filler concrete provided and installed by the customer.
- + Length and width dimensions within 100 mm range.
- + For transportation, at least one of the exterior dimensions (width or length) must be inferior to 4500 mm.
- + Hardware and metalworking provided by the customer.

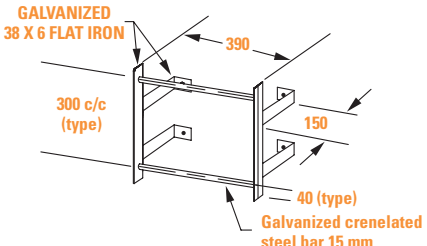


## GALVANIZED STEEL LADDER

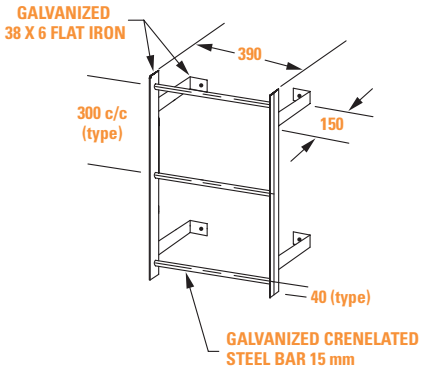
### 1 RUNG LADDER



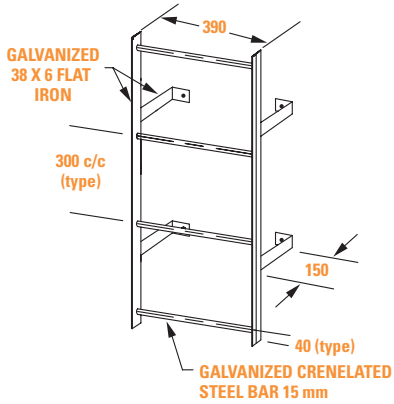
### 2 RUNG LADDER



### 3 RUNG LADDER

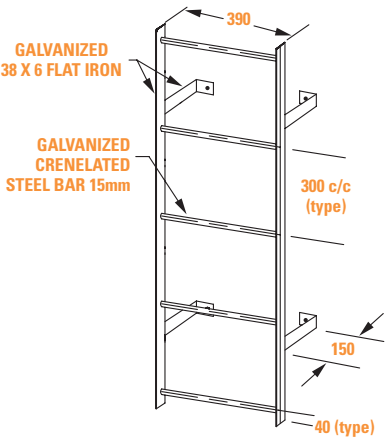


### 4 RUNG LADDER



ALSO AVAILABLE LOWERED RUNG COVERED WITH POLYETHYLENE  
(See reinforced circular concrete manholes)

### 5 RUNG LADDER



## TECHNICAL DATA SHEET

### STANDARDS

The concrete, the reinforcement steel and the rubber gaskets or liners meet the standard NQ 2622-420.

### HANDLING

The riser rings and the top slabs of Ø915 mm are provided with plastic casings embedded in the concrete. These casings are for the fasteners of the hoisting and handling equipment. The other elements of the manholes are provided with hoisting cables allowing for a secure handling of the elements in the factory and on the building site.

The customer will facilitate his work by using the suitable handling harnesses for the unloading and the installation of the manhole. An inadequate handling can produce breakings, which would irretrievably affect the structure of the manhole and its watertightness.

### INSTALLATION GUIDELINES

The surfaces of the fittings and the rubber gaskets must be clean. In accordance with the standard NQ 2622-420, the lubricant used must be the one provided by the manufacturer of the pipe. The use of another lubricant can restrain or cancel the responsibility of the manufacturer in regards to the watertightness or physical characteristics of the rubber gaskets. The abundant use of lubricant is recommended during the fitting of rings and pipes. The Ø915mm rings require a minimum of 500g of lubricant per gasket.

Manholes will have to be set up according to the sequence pointed out in the workshop drawings. The riser rings will be installed according to a height diminishing order. The desired profile will be obtained according to the workshop drawings.

Precautions must be taken to prevent the contact of oil or sulphur based products with the rubber gaskets, which would deteriorate and become unusable.